



Travelling to Aerospace Bristol

Contents

Where is Aerospace Bristol?	1
By car/ coach	1
By Train	3
By Bus	3
Contact us	5
Local Amenities	6
Local Taxi Companies	6
Local Hotels	7

Where is Aerospace Bristol?

The museum is located on the historic Filton Airfield, where every British Concorde made her maiden flight. You can find us at:

Aerospace Bristol
Hayes Way
Patchway
Bristol
BS34 5BZ

Please note that the above post code does not take you to the exact location of the museum, so we suggest you check Google Maps before setting out. Alternatively, you can pinpoint our exact location using [what3words](#) - search [pilots.factories.chew](#) to find the museum.

By car/ coach

There are brown signs along three routes:

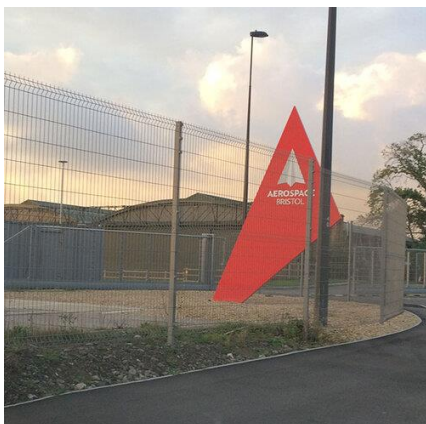
- From M5 junction 16
- From M5 junction 17
- Along the A38 from the Filton Roundabout (by the Air Balloon pub).



An Aerospace Bristol sign is shown at the start of each route. There is one just off M5 junction 16, one just off M5 junction 17, and one at the Filton Roundabout on the A38.



After the Aerospace Bristol signs, the museum symbol is used for the rest of each route.



Look out for the large red sign with 'Aerospace Bristol' on the entrance/exit to the car park.

From M5 Junction 17:

- Exit the M5 at junction 17 and follow signs for The Mall
- Pass The Mall on your left and continue in the direction of Filton
- At the third roundabout, after passing the entrances to The Mall on your left, take the third exit towards Filton Bristol (A38) along Hayes Way
- Go straight over the next two roundabouts
- At the third roundabout, take the third exit so that you are returning in the direction you came. Aerospace Bristol is on your left, just after Lidl.

From M5 Junction 16:

- Exit the M5 at junction 16 and follow the A38 (Gloucester Road) in the direction of Filton



- Go straight across the first roundabout (2nd exit) continuing along the A38 (Gloucester Road)
- After approximately 1.5 miles, turn right onto Hayes Way by the Travelodge in the direction of Charlton Hayes and The Mall
- At the roundabout, take the first exit and continue along Hayes Way. Aerospace Bristol is on your left, just after Lidl.

From Bristol city centre:

- Continue north along Gloucester Road until you reach the Filton roundabout
- Go straight across heading along Gloucester Road North, passing Filton Airfield and the Royal Mail on your left
- After the flyover, take the left junction before the Travelodge in the direction of The Mall, M5 South and Charlton Hayes
- At the roundabout, take the first exit and continue along Hayes Way. Aerospace Bristol is on your left, just after Lidl.

From South Wales:

- Cross over the River Severn taking either the Prince of Wales Bridge or the Severn Bridge and continue until the M4 and M48 merge into the M4, and then take the lane marked South West M5 towards Bristol
- Continue along the slip road towards the M5 but remain in the left hand lane
- Exit the M5 at junction 16 and follow the A38 (Gloucester Road) in the direction of Filton
- Go straight across the first roundabout (2nd exit) continuing along the A38 (Gloucester Road)
- After approximately 1.5 miles, turn right onto Hayes Way by the Travelodge in the direction of Charlton Hayes and The Mall
- At the roundabout, take the first exit and continue along Hayes Way. Aerospace Bristol is on your left, just after Lidl.

By Train

Our nearest railway station is Bristol Parkway and from here you will find both bus and taxi services that will bring you to Aerospace Bristol.

By Bus

Our nearest bus stops are Gipsy Patch Lane and Charlton Boulevard and both walking distance from the museum.

If travelling from Bristol Parkway take either:

- The **19** First Bus service towards Cribbs Causeway and alight at Charlton Boulevard.
- The **Y6** Lynx Bus service towards Bristol and alight at Charlton Boulevard.



If travelling from Bristol City Centre, please take either:

- The **3X** Stagecoach Bus service towards Aztec West and alight at Gipsy Patch Lane.
- The **75** First Bus service towards Cribbs Causeway and alight at Gipsy Patch Lane.
- The **Y6** Lynx Bus service towards Chipping Sodbury / Yate and alight at Gipsy Patch Lane.

Walking from Gipsy Patch Lane Bus Stop:

- Follow the footpath northbound towards the Travelodge.
- Continue along the footpath bearing left in the direction of The Mall, M5 South and Charlton Hayes.
- Pass the roundabout and continue along Hayes Way. After approximately 400 metres Aerospace Bristol is on your left, just after Lidl.

Walking from Charlton Boulevard bus stop:

- Follow Charlton Blvd until you reach the Concorde roundabout. You should see a Travelodge on your left. Aerospace Bristol is in the opposite direction, to your right.
- Cross the road and turn right. You should see a brown museum symbol road traffic sign at the correct roundabout exit.
- Continue walking along Hayes Way - heading away from the Travelodge - and Aerospace Bristol is on your left, just after Lidl.



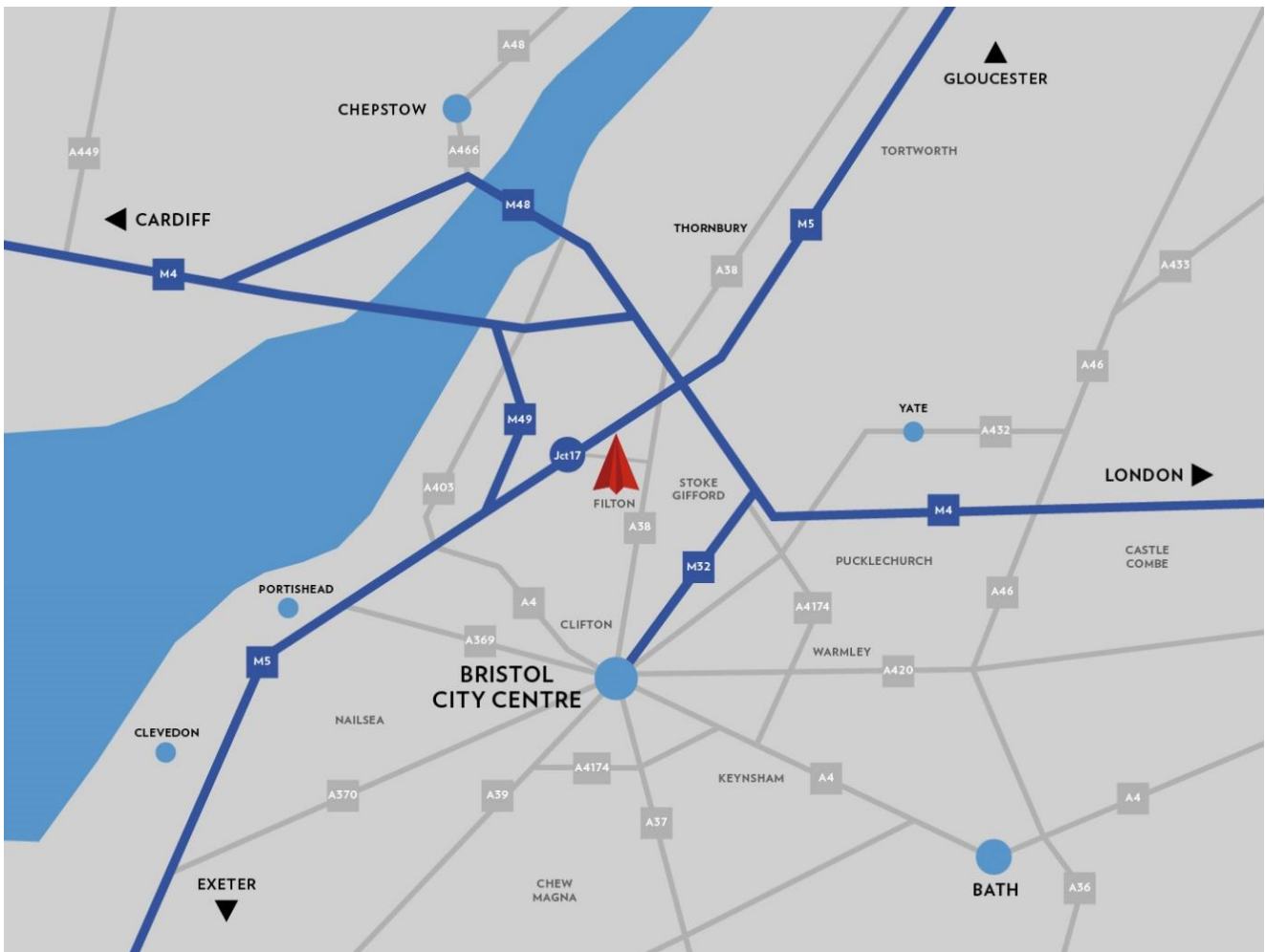
Contact us

For event enquiries:

events@aerospacebristol.org

For general inquiries:

info@aerospacebristol.org





Local Amenities

Local Taxi Companies

Bristol Parkway Taxis:

Private Hire services in Bristol

Tel: 0800 619 0047 or 0117 254 1111

Website: www.bristolparkwaytaxis.co.uk

South Glos Taxis Ltd:

24-hour radio controlled car service

Tel: 0117 969 6799

Website: www.taxisinbristol.co.uk

Bristol Metro Taxis:

24/7 service in Bristol and South Gloucestershire

Tel: 0800 023 5453 or 0145 487 7598

Website: www.bristolmetrotaxis.co.uk

Good Connexions:

Locally based in Hambrook & Kingswood

Tel: 07798 663 322

Website: www.goodconnexions.com

Eurotaxi:

Bristol & South Gloucestershire

Tel: 0333 666 666

Website: <http://www.eurotaxi.com/>

The **Uber** app on your smartphone can order a taxi from your location, and can take you directly to Aerospace Bristol.



Local Hotels

Travelodge Bristol Filton Hotel:

Distance: 0.6 miles

Address: Concorde Roundabout, Hayes Way, Patchway, Bristol, BS34 5GN

Phone: 0871 559 1883

www.travelodge.co.uk/hotels/606/Bristol-Filton-hotel

Village Hotel Bristol

Distance: 1.6 miles

Address: Bullfinch Cl, Filton, Bristol BS34 6FG

Phone: 0117 456 3434

<https://www.village-hotels.co.uk/bristol>

Double Tree Hilton Hotel Bristol North

Distance: 2 miles

Address: Woodlands Lane, Bradley Stoke, Bristol, BS32 4JF

Phone: 01454 201 144

www.doubletree3.hilton.com/en/hotels/united-kingdom/doubletree-by-hilton-hotel-bristol-north-BSTBRDI/index.html

Mollies Motel

Distance: 2.8 miles

Address: A4018, Cribbs Causeway, Bristol BS10 7TL

Phone: 0117 374 7740

<https://mollies.com/>

Mercure Bristol North the Grange Hotel

Distance: 3.9 miles



Address: Old Gloucester Road, Frampton Cotterell, Bristol, BS36 1RP

Phone: 0844 815 9063

<https://all.accor.com/hotel/8323/index.en.shtml>

Berwick Lodge

Distance: 4.3 miles

Address: Berwick Lodge, Berwick Drive, Bristol, BS10 7TD

Phone: 0117 958 1590

<https://www.berwicklodge.co.uk/>

Holiday Inn Bristol – Filton

Distance: 4.6 miles

Address: Filton Road, Winterbourne, Bristol, BS16 1QX

Phone: 0871 942 9014

<https://www.ihg.com/holidayinn/hotels/gb/en/bristol/brsfr/hoteldetail>